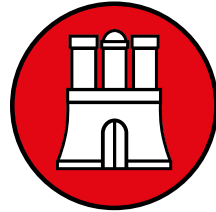


Pallas



— HAMBURG —

PALLAS P-TAC
PUMP-ACTION SHOTGUN
INSTRUCTION MANUAL

**Read this manual carefully
before using the firearm.**

FIREARMS SAFETY

At Pallas we believe that safe firearms handling is the most important consideration of anyone who uses firearms and ammunition. Please take a few minutes to thoroughly read and understand this instruction manual.

Many makes and models of firearms may LOOK very similar. However, they differ widely in design and operation, and in the location and function of various controls.

You should completely understand this manual before loading, unloading and firing with live ammunition.

Remember, firearms safety does depend on you !

Serial No.

Date Purchased:

Purchased From:

THIS MANUAL CONTAINS

I. GENERAL SAFETY WARNINGS

General safety warnings, which should be read and understood before using this firearm.

II. OPERATION INSTRUCTIONS

Directions and procedures for handling, loading, firing and unloading.

III. MAINTENANCE AND CLEANING

Instructions for care, cleaning, repair and service of this shotgun.

This instruction and safety manual is designed to help you learning how to properly use and take care of your Pallas shotgun. Only when you are certain you have familiarized yourself with the function of your firearm you should practice loading, unloading and firing live rounds of ammunition.

This instruction manual should always accompany this firearm and be transferred with it upon change of ownership.

Safe gun handling is your personal responsibility at all times.

DISCLAIMER OF LIABILITY

Pallas shall not be responsible for product malfunctioning or physical injury, death or damage to property resulting from either intentional or accidental discharge of this firearm, it criminal or negligent use, improper or careless handling, unauthorized modifications or alteration, use of defective or improper or hand-loaded or replaced ammunition, or from its use for purposes or subjection to treatment for which it is not designed.

For your safety, use only original high quality commercially manufactured ammunition in good condition that is appropriate to the caliber/gauge of your gun.

Pallas shall not be responsible for product or its result from use of defective, improper or reloaded ammunition.

WARNING – LEAD EXPOSURE

Discharging firearms in poorly ventilated areas, cleaning firearms or handling ammunition may result in exposure to lead and other substances that may cause birth defect, reproductive harm and other serious physical injury. Have adequate ventilation at all times. Wash your hands thoroughly after exposure. Shooting or cleaning guns may expose you to lead.

WARNING: Prior to removing this gun from its packaging, and prior to loading and firing, carefully and thoroughly read the entire instruction manual which gives advice on the gun's proper handling and functioning. However, your safety and that of others depends on your responsible compliance with that advice. If unfamiliar with firearms seek supervised instruction.

Firearms safety is your responsibility !

I. GENERAL SAFETY WARNINGS

1. Careless and improper handling of this gun could result in unintended discharge causing injury, death or damage to property. Safety must be the first and constant consideration when handling a firearm and ammunition.
2. This shotgun was designed to function properly in its original condition. Alterations can make it unsafe. Do not alter any part or add or replace parts.
3. Shotguns should only be carried with the action open and chamber empty to prevent accidental discharge.
4. **Always handle and treat your gun as if it were loaded** so you never fire it accidentally. Never take anyone's word it is unloaded. Always check it yourself with your fingers off the trigger and the gun pointed in a safe direction.
5. Never place your finger inside the trigger guard unless you intend to fire.
6. Water, snow, mud, excessive lubricating oil or grease or any other material can obstruct the barrel of your gun. Always check the barrel of your firearm for obstruction before loading and firing. Clean a fouled gun immediately to ensure its correct and safe function.
7. **Keep the gun's muzzle pointed in a safe direction at all times.** Never let the muzzle of a firearm point at any part of our body, another person or at anything you do not intend to shoot. Always be certain of your target before firing.
8. Use only high quality ammunition specifically designed for your gauge of shotgun. The barrel is marked with the size of shotshell it will accept. If the barrel is marked "3" it will accept 3 inch and 2 3/4 inch shotshells. **Never load the chamber with a shell that is longer than the chamber is marked.**
9. **Unload all firearms when not in use. Never store a loaded firearm.** Firearms and ammunition should be safely stored separately so that they are inaccessible to children or unauthorized users.

10. Always make sure your gun is unloaded before cleaning, storing or handing it to another person.
11. Always wear safety glasses while shooting to protect your eyes from injury by gun powder, gas, lubricant, dirt or metallic particles, carbon residue, sparks or other debris.
12. Always wear ear protection when shooting, especially on a range. Without ear protection, the noise from your gun, and other guns close to you, could leave a "ringing" in the ears for some time after firing. Repeated exposure to shooting noise could result in permanent hearing loss.
13. Never climb a tree, fence or wall while carrying a loaded firearm. Remove ammunition and hand the gun to someone else or place it on the ground on the other side of the obstacle before crossing it yourself. **DO NOT** lean a gun against a tree or other obstacle; it could fall and possibly discharge.
14. **DO NOT** shoot at a hard surface or at water. Bullets and shot can ricochet or bounce off and travel in unpredictable directions with great velocity.
15. Firearms and alcohol **DO NOT** mix. Never drink alcoholic beverages or take drugs before or during shooting, as this constitutes criminal disregard for your safety and that of others. Never use a gun while you are taking medication unless you have checked with your doctor to ensure your fitness to handle your gun safely.
16. If you have any doubts about your ability to handle or use this shotgun safely, seek supervised instruction.
17. **Remember, safety is your responsibility, be a safe shooter!**
18. **FOLLOW THE LAW:** Obey all local, state and federal laws regarding storage, shooting and transporting your firearm.

II. OPERATION INSTRUCTIONS

ABOUT YOUR PUMP-ACTION SHOTGUN

Your shotgun is manually operated. Once a shell has been fired, the locking lug in the bolt moves down, unlocking the gun. The forearm can then be moved to the rear, ejecting and loading a new shell.

To open the bolt without firing the gun, depress the action bar lock, located just beside and forward of the trigger. This allows for opening the action without dry firing.

The magazine tube will only accept 5pcs 2 3/4 shells or 4 pcs 3" shells

Please check if your shotgun model includes mobile chokes.

SAFETY SWITCH OR BUTTON

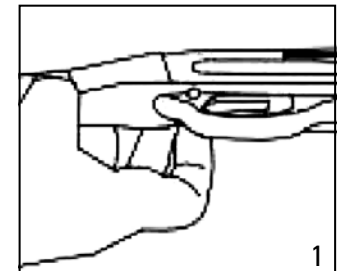
The safety is designed to stop the trigger mechanism.

WARNING: Do not rely on your gun's safety. Treat every gun as if it were loaded and ready to fire.

The safety on any gun is a mechanical device, and it is not intended as a substitute for common sense or safe gun handling. Always keep the muzzle pointed in a safe direction.

A) The safety is located behind the trigger and provides protection against accidental or unintentional discharge under normal usage when properly used.

B) To engage the safety, push the button so that it protrudes from the right side of the gun and the **red band marking can not be seen**. The safety should always be in the "on" or "safe" position until you intend to fire the gun (Fig. 1).

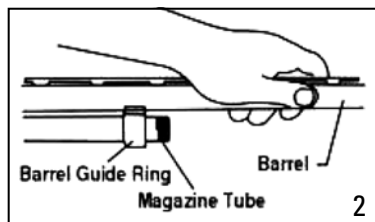


- B) When you are ready to fire the gun, press the safety button to the "off" position so that the safety protrudes from the left side of the gun and the **red band marking is showing**.

DANGER: The gun will fire when the trigger is pulled intentionally or accidentally when the **red band marking is showing**.

ASSEMBLY

1. Remove the magazine cap.
2. Press upward on the action bar lock. Pull the forearm approximately half way rearward.
3. Hold the barrel in front of the barrel guide ring (Fig. 2).
4. Slide the barrel guide ring over the magazine tube. Clean the barrel following the instructions on Page 12.
5. Press upward on the action bar lock.
6. Align the ejector on the inside of the barrel with the slot in the bolt.
7. Carefully set the barrel into the receiver. **Do not force it!**
8. Replace the magazine cap. Tighten.

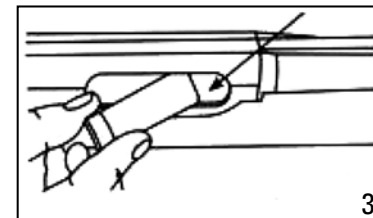


DISASSEMBLY

1. **Make sure the gun is unloaded!**
2. Point firearm in a safe direction.
3. Push up on the action bar lock.
4. Slide forearm forward half way.
5. Unscrew end remove the magazine cap.
6. Pull the barrel carefully out of the receiver.
7. Push the carrier forward.
8. Press and hold the action bar lock.
9. Slide the forearm forward and off the magazine tube.

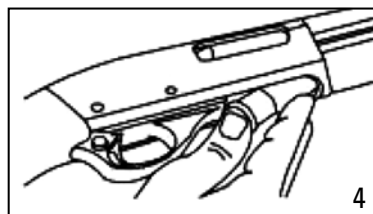
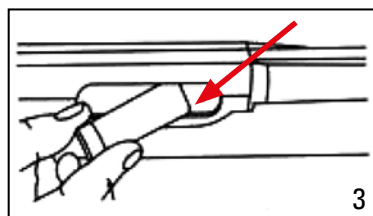
LOADING YOUR SHOTGUN (ONE SHELL ONLY)

1. Put safety in the "on" position.
2. Point the gun in a safe direction.
3. Push up on the action bar lock.
4. Pull the forearm completely to the rear and carefully hold it.
5. Put one shell through the ejection port, making sure it is the correct gauge and length (Fig. 3).
6. Push the forearm forward and close the action.



FULLY LOADING YOUR SHOTGUN

1. Put safety in the "on" position.
2. Point the gun in a safe direction.
3. Push up on the action bar lock.
4. Pull the forearm completely to the rear and carefully hold it.
5. Put one shell through the ejection port, making sure it is the correct gauge and length (Fig. 3)
6. Push the forearm forward and close the action.
7. Push a shell upward against the bottom of the carrier (Fig. 4).
8. Push two (2) to four (4) shells, one at a time, fully forward into the magazine tube.



CAUTION: For the models with return spring in the forend, you do not need to push the forearm to close the action, this will be done automatically by the help of the spring. The spring will close the action at a very fast rate, use caution and watch out for your fingers and loose clothing.

USAGE OF CHOKE TUBES (IF YOUR SHOTGUN INCLUDES)

The choke controls how open or tight the pattern of the shot will be. The chart on the right lists the chokes available (from open to tight) and the core spending marks that indicate the specific choke.

| | 0.00 | 0.25 | 0.5 | 0.75 | 1.0 |
|-----------|-------|-------|-----|------|-----|
| | SKEET | IC | M | IM | F |
| CHOKETUBE | | | | | |
| MARK | ★★★★★ | ★★★★★ | ★★★ | ★★ | ★ |

Never fire your gun or run cleaning tools through a barrel that has a choke tube without having a choke installed. The threads of the choke tube and the internal threads of the barrel should be cleaned after each use and before installation of the choke. Your shotgun uses Beretta®/Benelli® style choke tubes.

To install a tube, insert the tube into the top of the barrel and tighten with your fingers. Once the tube is finger tightened, tighten the rest of the way with the appropriate choke tube wrench until the tube is snug. **DO NOT** over tighten or forcefully tighten with the wrench.

IMPORTANT

USAGE OF STEEL SHOT

The choke (constriction) in all modern shotguns has been established based on the pattern performance of shot shells loaded with lead shot. When using steel shot shells, you will notice a different performance in pattern density versus the established lead shot pattern, because steel shot is harder and lighter than lead shot.

You should be aware of the following differences and cautions:

Never shoot steel shot loads in a full choked barrel or an improved modified choked barrel. To do so may cause the barrel to swell or rupture.

In general, steel shot fired with a modified choke will produce the equivalent of a lead full choke pattern. This will be true of all steel shot sized up to and including no. 2. The established improved cylinder chokes will produce the equivalent of a (lead) modified pattern.

All steel shot sized larger than no. 2, and including special sized such as F, T, etc. should be used only with improved cylinder chokes. These steel shot sizes, when used in an improved cylinder choke, will produce equivalent to (lead) full choke patterns. The established cylinder choke or bore will produce the equivalent of a modified (lead) pattern.

Additional information concerning the use of steel shot is available from the ammunition companies.

CAUTION: No further disassembly is needed, unless it is done by persons qualified in shotgun repair. Improper functioning and damage to the gun may result otherwise.

III. MAINTENANCE AND CLEANING

CAUTION: Make sure the gun is UNLOADED.

1. Make sure the broad, polished finely fitted mating surface of the breech block and receiver is especially clean and lightly oiled with high quality gun oil. Do not use silicone or lanolin (Do not use WD-40).
2. Run an oil patch through the bore with a cleaning rod starting from the breech end. To prevent leading, use a cleaning solvent and brass brush to clean the bore periodically. Follow this cleaning with one or two clean oil patches. Important: If your gun is equipped with choke tubes, do not use a brass brush to clean the barrels without having a choke tube installed. Barrels that utilize choke tubes must also have the choke tubes removed to clean and oil the threads inside the barrel and the choke tubes themselves. This will protect the threads and prevent dirt build up that can cause tubes to become difficult to remove.

Never fire your gun without choke tubes snugly tightened in barrels. Do not over tighten choke tubes. Wipe all exposed metal surfaces with an oiled cloth before storing. Do not squirt or pour oil into the inside mechanism because it may hamper proper functioning. After extended periods

of heavy use, your gun should be taken to a qualified gunsmith to have the action disassembled for professional cleaning and lubrication.

3. Care for your wood stock and forearm the same way you would a piece of furniture with the same finish.

STORAGE

Clean thoroughly and oil your gun before storage. Store the gun in a case to prevent scratches and dents. Store your firearm in a dry place to prevent corrosion.

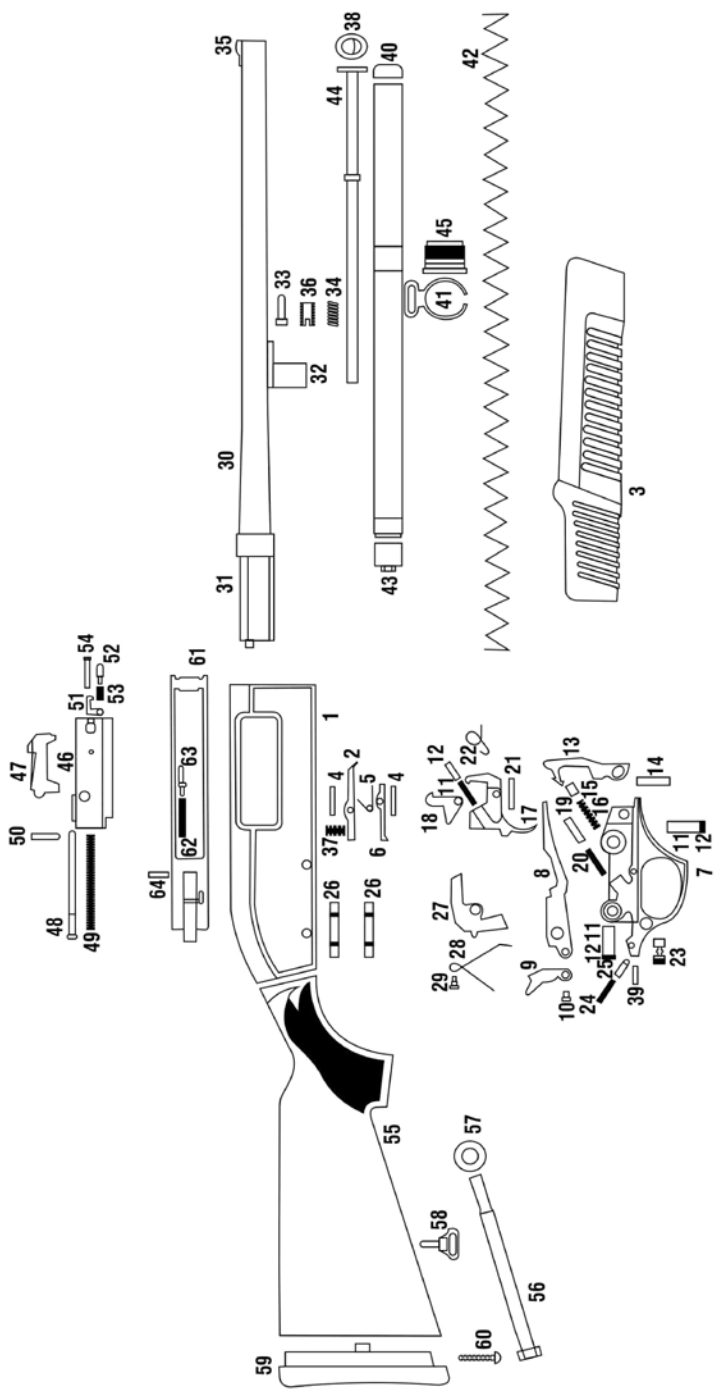
Store the gun away from children and in a place where it cannot be obtained by those unauthorized to use it. Always store gun unloaded and separately from any ammunition.

HAZARDOUS MATERIAL WARNING

Discharging firearms in poorly ventilated areas, cleaning firearms or handling ammunition, may result in exposure to lead and other substances known to cause birth defects, reproductive harm and other serious injury. Have adequate ventilation at all times.

Wash hands thoroughly after exposure.

Parts View



Parts List

| | | | | | |
|----|-----------------------------|----|------------------------------|----|--------------------------|
| 1 | Receiver | 23 | Safety | 45 | Magazine Bolt Cap |
| 2 | Carrier Latch | 24 | Safety Spring | 46 | Bolt Action |
| 3 | Forend | 25 | Safety Capsule | 47 | Locking Block |
| 4 | Carrier Latch Pin | 26 | Capsule Pin | 48 | Firing Pin |
| 5 | Carrier Holder | 27 | Unloading Latch | 49 | Firing Pin Spring |
| 6 | Spring Cartridge Holder | 28 | Unloading Latch Spring | 50 | Firing Pin Holder |
| 7 | Trigger Group | 29 | Unloading Latch Spring Screw | 51 | Extractor |
| 8 | Cartridge Carrier | 30 | Barrel | 52 | Extractor Pin |
| 9 | Cartridge Lifter | 31 | Barrel Lug | 53 | Extractor |
| 10 | Cartridge Lifter Pin | 32 | Pump Ring | 54 | Extractor Spring Pin |
| 11 | Internal Safety Spring | 33 | Pump Ring Pin | 55 | Grip |
| 12 | Internal Safety Spring Case | 34 | Pump Ring Spring | 56 | Heat Shield |
| 13 | Hammer | 35 | Bead | 57 | Heat Shield Screw |
| 14 | Hammer Pin | 36 | Pump Ring Screw | 58 | Sling Swivel |
| 15 | Hammer Pin Capsule | 37 | Metal Holder Spring | 59 | Grip Key |
| 16 | Hammer Spring | 38 | Plug Gap | 60 | Grip Screw |
| 17 | Trigger | 39 | Safety Pin | 61 | Sliding Bar |
| 18 | Internal Safety | 40 | Magazine Upper Gap | 62 | Sliding Bar Spring |
| 19 | Internal Safety Capsule | 41 | Sling Swivel | 63 | Sliding Bar Pin |
| 20 | Internal Safety Spring | 42 | Magazine Spring | 64 | Sliding Bar Riveting Pin |
| 21 | Trigger Pin | 43 | Cartridge Ejector Plug | | |
| 22 | Trigger Spring | 44 | Plug | | |

www.pallas-sports.com

mail@pallas-sports.com