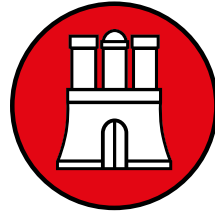


# Pallas



— HAMBURG —

**PALLAS ARCADIA  
SIDE-BY-SIDE SHOTGUN  
INSTRUCTION MANUAL**

**Read this manual carefully  
before using the firearm.**

## **FIREARMS SAFETY**

At Pallas we believe that safe firearms handling is the most important consideration of anyone who uses firearms and ammunition. Please take a few minutes to thoroughly read and understand this instruction manual.

Many makes and models of firearms may LOOK very similar. However, they differ widely in design and operation, and in the location and function of various controls.

You should completely understand this manual before loading, unloading and firing with live ammunition.

Remember, firearms safety does depend on you!

Serial No. ....

Date Purchased: .....

Purchased From: .....

## **THIS MANUAL CONTAINS**

### **I. GENERAL SAFETY WARNINGS**

General safety warnings, which should be read and understood before using this firearm.

### **II. OPERATION INSTRUCTIONS**

Directions and procedures for handling, loading, firing and unloading.

### **III. MAINTENANCE AND CLEANING**

Instructions for care, cleaning, repair and service of this shotgun.

This instruction and safety manual is designed to help you learning how to properly use and take care of your Pallas shotgun. Only when you are certain you have familiarized yourself with the function of your firearm you should practice loading, unloading and firing live rounds of ammunition.

This instruction manual should always accompany this firearm and be transferred with it upon change of ownership.

**Safe gun handling is your personal responsibility at all times.**

## DISCLAIMER OF LIABILITY

Pallas shall not be responsible for product malfunctioning or physical injury, death or damage to property resulting from either intentional or accidental discharge of this firearm, it criminal or negligent use, improper or careless handling, unauthorized modifications or alteration, use of defective or improper or hand-loaded or replaced ammunition, or from its use for purposes or subjection to treatment for which it is not designed.

For your safety, use only original high quality commercially manufactured ammunition in good condition that is appropriate to the caliber/gauge of your gun.

Pallas shall not be responsible for product or its result from use of defective, improper or reloaded ammunition.

## WARNING – LEAD EXPOSURE

Discharging firearms in poorly ventilated areas, cleaning firearms or handling ammunition may result in exposure to lead and other substances that may cause birth defect, reproductive harm and other serious physical injury. Have adequate ventilation at all times. Wash your hands thoroughly after exposure. Shooting or cleaning guns may expose you to lead.

**WARNING:** Prior to removing this gun from its packaging, and prior to loading and firing, carefully and thoroughly read the entire instruction manual which gives advice on the gun's proper handling and functioning. However, your safety and that of others depends on your responsible compliance with that advice. If unfamiliar with firearms seek supervised instruction.

**Firearms safety is your responsibility !**

## I. GENERAL SAFETY WARNINGS

1. Careless and improper handling of this gun could result in unintended discharge causing injury, death or damage to property. Safety must be the first and constant consideration when handling a firearm and ammunition.
2. This shotgun was designed to function properly in its original condition. Alterations can make it unsafe. Do not alter any part or add or replace parts.
3. Shotguns should only be carried with the action open and chamber empty to prevent accidental discharge.
4. **Always handle and treat your gun as if it were loaded** so you never fire it accidentally. Never take anyone's word it is unloaded. Always check it yourself with your fingers off the trigger and the gun pointed in a safe direction.
5. Never place your finger inside the trigger guard unless you intend to fire.
6. Water, snow, mud, excessive lubricating oil or grease or any other material can obstruct the barrel of your gun. Always check the barrel of your firearm for obstruction before loading and firing. Clean a fouled gun immediately to ensure its correct and safe function.
7. **Keep the gun's muzzle pointed in a safe direction at all times.** Never let the muzzle of a firearm point at any part of our body, another person or at anything you do not intend to shoot. Always be certain of your target before firing.
8. Use only high quality ammunition specifically designed for your gauge of shotgun. The barrel is marked with the size of shotshell it will accept. If the barrel is marked "3" it will accept 3 inch and 2 3/4 inch shotshells. **Never load the chamber with a shell that is longer than the chamber is marked.**
9. **Unload all firearms when not in use. Never store a loaded firearm.** Firearms and ammunition should be safely stored separately so that they are inaccessible to children or unauthorized users.

10. Always make sure your gun is unloaded before cleaning, storing or handing it to another person.
11. Always wear safety glasses while shooting to protect your eyes from injury by gun powder, gas, lubricant, dirt or metallic particles, carbon residue, sparks or other debris.
12. Always wear ear protection when shooting, especially on a range. Without ear protection, the noise from your gun, and other guns close to you, could leave a "ringing" in the ears for some time after firing. Repeated exposure to shooting noise could result in permanent hearing loss.
13. Never climb a tree, fence or wall while carrying a loaded firearm. Remove ammunition and hand the gun to someone else or place it on the ground on the other side of the obstacle before crossing it yourself. **DO NOT** lean a gun against a tree or other obstacle; it could fall and possibly discharge.
14. **DO NOT** shoot at a hard surface or at water. Bullets and shot can ricochet or bounce off and travel in unpredictable directions with great velocity.
15. Firearms and alcohol **DO NOT** mix. Never drink alcoholic beverages or take drugs before or during shooting, as this constitutes criminal disregard for your safety and that of others. Never use a gun while you are taking medication unless you have checked with your doctor to ensure your fitness to handle your gun safely.
16. If you have any doubts about your ability to handle or use this shotgun safely, seek supervised instruction.
17. **Remember, safety is your responsibility, be a safe shooter!**
18. **FOLLOW THE LAW:** Obey all local, state and federal laws regarding storage, shooting and transporting your firearm.

## II. OPERATION INSTRUCTIONS

### ABOUT YOUR SIDE-BY-SIDE SHOTGUN

Actions of all Pallas side-by-side models are of boxlock design and are made of high grade steel for superior strength.

Barrels are chambered for 2 3/4" or 3" shells and are marked accordingly on the barrel. The barrels are hard chromed and steel shot compatible.

#### SAFETY BUTTON

- A. The safety switch (button) is located on the top tang of your firearm.
- B. To engage the safety, slide the button rearward so the letter "S" is visible. The safety should always be in the "on" or "safe" position until you intend to fire.
- C. When you are ready to fire the shotgun slide the safety button forward to the "off safe" position so that the letter "S" is not visible.

**WARNING:** Do not rely solely on your guns safety. Treat every gun as if it is loaded and ready to fire. The safety is a mechanical device and is not intended to serve as a substitute for common sense or safe gun handling. Always keep the muzzle pointed in a safe direction.

**DANGER:** The shotgun will fire when the trigger is pulled while the safety button is in the forward or "off" position and the "S" does not show. Always keep the muzzle pointed in a safe direction.

## ASSEMBLY

The shotgun is packed in a cardboard box in two sub-assemblies; the action/stock assembly and the forend/barrel assembly.

### Make sure there are no shells in the chamber when assembling.

1. Remove all dirt and excess oil from the gun, especially from the breech area, the barrel interior and ends.
2. Remove the forearm by pushing the forearm iron catch upwards or pressing the forearm release button, this allows the nose of the forearm to release. With your other hand and at the same time you are pushing the iron catch release upwards, separate the forearm from the barrel (Fig. 1).

3. Lightly oil the already cleaned contact points. Attach the barrels to the action by grasping the grip of the stock with your right hand and placing the stock under your right arm. With your right thumb move the opening lever to the right. Now hold the barrels with your free hand and slide the barrels through the top of the receiver, with the nose pointing down until the hinge notch engages with the hinge pins (Fig. 2).



4. Keeping the hinge pin notch engaged with the hinge pin, lift the nose of the barrels until the action closes. Caution: If you attempt to close the gun and the barrels bind or don't seem to fit then the hinge pin and notch are not engaged. **DO NOT FORCE**, try again. Release the hinge pin and notch and the barrels will be locked in place.



5. Replace the forearm on the gun by sliding the rear of the forearm into the barrel at the same angle by which you removed it. The round rear of the forend should match the



round front of the receiver. Lift the nose of the forend until it engages with the barrels with an audible "click." If the forearm release latch protrudes after the "click" gently push it in place (Fig. 3).

## LOADING AND OPERATING YOUR SHOTGUN

1. Slide the safety, located on the tang of the receiver, toward the butt of the gun into the "safe" position.
2. Break the action open.
3. Check the barrels for any obstruction, including dirt and excess oil.

**CAUTION:** Obstructions can increase barrel pressure sufficiently so that the barrel can explode when the gun is fired.

4. Insert the shot shells into the chamber or chambers you plan to fire.

**CAUTION:** Make sure the shells are of the proper gauge and chamber length for your gun.

**Pallas is not responsible** for damage to a gun or shooter caused by malfunctioning ammunition, new, remanufactured, reloaded or hand loaded.

5. Close the action.
6. The order in which the barrels are fired depends upon the selective trigger.
7. When contemplating firing your gun, be sure of your target, what is behind it, and the location of all persons with you or in your vicinity. Pick your target, release the safety by sliding it forward with your thumb and pull the trigger with your forefinger.
8. To unload, press the opening lever to the right and open the action. The fired shells will be ejected and unfired shells will be elevated above the chamber on models with automatic selective ejectors. Models with extractors will only elevate both fired and unfired shells.

**CAUTION:** In case of a misfire, wait at least 30 seconds while keeping the gun pointed in a safe direction. Then, carefully open the action away from yourself and others. If the primer on the rim is indented, the shell should be discarded in a manner that would prevent accidental injury to you and others. If there is no indentation on the primer or rim, your gun has malfunctioned and should be serviced by a qualified gunsmith.

## DISASSEMBLY

1. Make sure the gun is unloaded and no shells are in the chamber.
2. Close the action. Place the gunbutt on your thigh and remove the forend by pulling its release latch or pressing the forend release button.

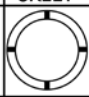
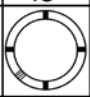
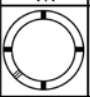
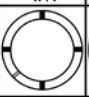

While pulling the nose of the forearm away from the barrels, slide the forearm forward until separated from the barrels.

3. Separate the barrels from the receiver by holding the stock of the gun in your right hand and the barrels in your left. Push the opening lever to the right with your thumb. Allow the nose of the barrels to drop and lift the barrels upward out of the receiver.
4. Close the top lever by pressing on the button located in the action.
5. The gun can now be cleaned. The forend should be reattached to the barrels for storage.

**CAUTION:** No further disassembly is needed, unless it is done by persons qualified in shotgun repair. Improper functioning and damage to the gun may result otherwise.

## USAGE OF CHOKE TUBES (IF YOUR SHOTGUN INCLUDES)

The choke controls how open or tight the pattern of the shot will be. The chart on the right lists the chokes available (from open to tight) and the core spending marks that indicate the specific choke.

	0.00	0.25	0.5	0.75	1.0
	SKEET	IC	M	IM	F
CHOKE TUBE					
MARK	★★★★★	★★★★★	★★★	★★	★

Never fire your gun or run cleaning tools through a barrel that has a choke tube without having a choke installed. The threads of the choke tube and the internal threads of the barrel should be cleaned after each use and before installation of the choke. Your shotgun uses Beretta®/Benelli® style choke tubes.

To install a tube, insert the tube into the top of the barrel and tighten with your fingers. Once the tube is finger tightened, tighten the rest of the way with the appropriate choke tube wrench until the tube is snug. **DO NOT** over tighten or forcefully tighten with the wrench.

## IMPORTANT

### USAGE OF STEEL SHOT

The choke (constriction) in all modern shotguns has been established based on the pattern performance of shot shells loaded with lead shot. When using steel shot shells, you will notice a different performance in pattern density versus the established lead shot pattern, because steel shot is harder and lighter than lead shot.

**You should be aware of the following differences and cautions:**

**Never shoot steel shot loads in a full choked barrel or an improved modified choked barrel. To do so may cause the barrel to swell or rupture.**

In general, steel shot fired with a modified choke will produce the equivalent of a lead full choke pattern. This will be true of all steel shot sized up to and including no. 2. The established improved cylinder chokes will produce the equivalent of a (lead) modified pattern.

All steel shot sized larger than no. 2, and including special sized such as F, T, etc. should be used only with improved cylinder chokes. These steel shot sizes, when used in an improved cylinder choke, will produce equivalent to (lead) full choke patterns. The established cylinder choke or bore will produce the equivalent of a modified (lead) pattern.

Additional information concerning the use of steel shot is available from the ammunition companies.

**CAUTION:** No further disassembly is needed, unless it is done by persons qualified in shotgun repair. Improper functioning and damage to the gun may result otherwise.

### III. MAINTENANCE AND CLEANING

**CAUTION:** Make sure the gun is UNLOADED.

1. Make sure the broad, polished finely fitted mating surface of the breech block and receiver is especially clean and lightly oiled with high quality gun oil. Do not use silicone or lanolin (Do not use WD-40).
2. Run an oil patch through the bore with a cleaning rod starting from the breech end. To prevent leading, use a cleaning solvent and brass brush to clean the bore periodically. Follow this cleaning with one or two clean oil patches. Important: If your gun is equipped with choke tubes, do not use a brass brush to clean the barrels without having a choke tube installed. Barrels that utilize choke tubes must also have the choke tubes removed to clean and oil the threads inside the barrel and the choke tubes themselves. This will protect the threads and prevent dirt build up that can cause tubes to become difficult to remove.

Never fire your gun without choke tubes snugly tightened in barrels. Do not over tighten choke tubes. Wipe all exposed metal surfaces with an oiled cloth before storing. Do not squirt or pour oil into the inside mechanism because it may hamper proper functioning. After extended periods

of heavy use, your gun should be taken to a qualified gunsmith to have the action disassembled for professional cleaning and lubrication.

3. Care for your wood stock and forearm the same way you would a piece of furniture with the same finish.

### STORAGE

Clean thoroughly and oil your gun before storage. Store the gun in a case to prevent scratches and dents. Store your firearm in a dry place to prevent corrosion.

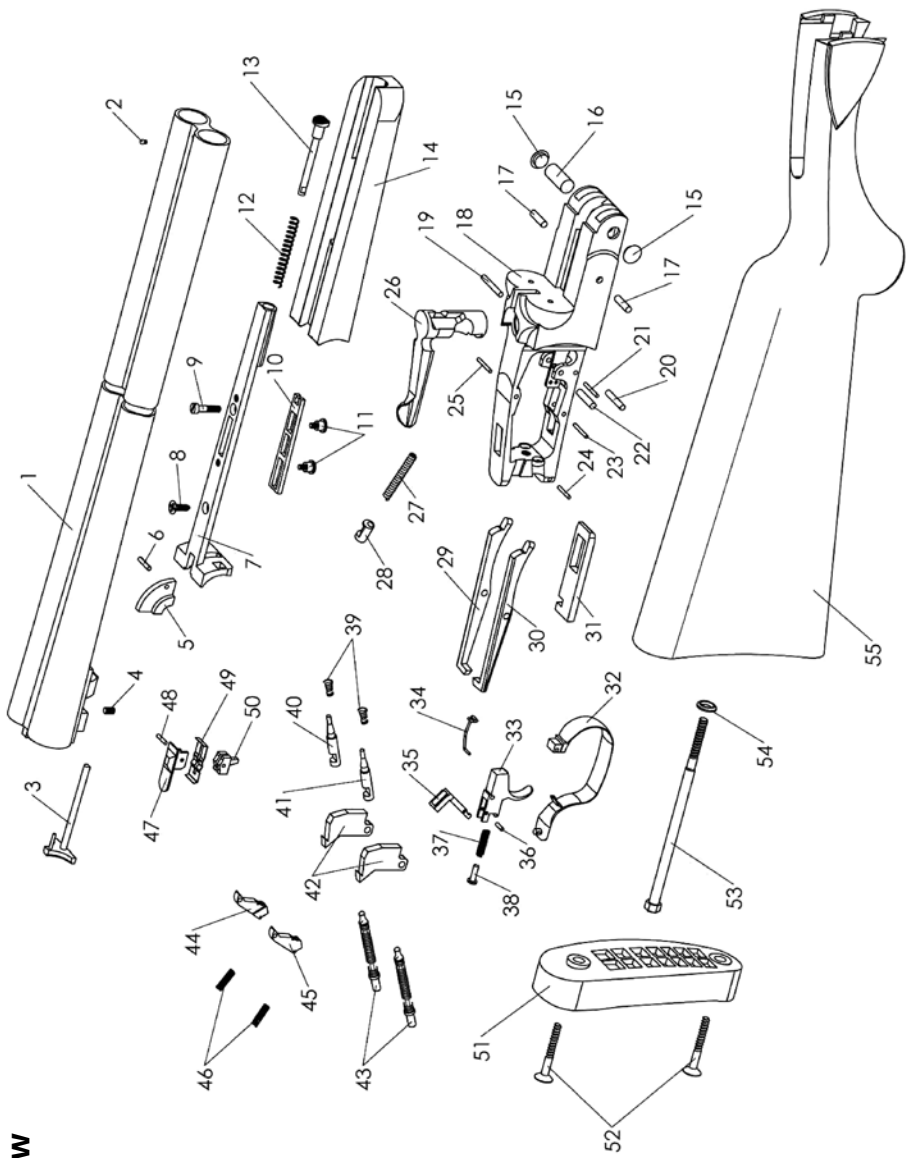
**Store the gun away from children and in a place where it cannot be obtained by those unauthorized to use it. Always store gun unloaded and separately from any ammunition.**

### HAZARDOUS MATERIAL WARNING

Discharging firearms in poorly ventilated areas, cleaning firearms or handling ammunition, may result in exposure to lead and other substances known to cause birth defects, reproductive harm and other serious injury. Have adequate ventilation at all times.

**Wash hands thoroughly after exposure.**

## Parts View



## Parts List

1	Barrels
2	Front Sight
3	Extractor
4	Extractor Screw
5	Extractor Cam
6	Extractor Cam Pin
7	Forearm Plate
8	Forearm Plate Back Screw
9	Forearm Plate Front Screw
10	Forearm Latch Plate
11	Forearm Latch Plate Screw
12	Forearm Latch Spring
13	Forearm Release Button
14	Forearm
15	Hinge Pin Cap
16	Hinge Pin
17	Cocking Lever Pin
18	Receiver
19	Firing Pin Retaining Pin
20	Top Lever Retaining Pin
21	Trigger Guard Front Pin
22	Hammer Pin
23	Trigger Pin
24	Trigger Guard Rear Pin
25	Sear Pin
26	Top Lever
27	Top Lever Spring
28	Top Lever Spring Follower
29	Left Cocking Lever
30	Right Cocking Lever
31	Barrel Latch Plate
32	Trigger Guard
33	Trigger
34	Trigger Spring
35	Sear Release
36	Sear Release Pin
37	Sear Release Spring
38	Sear Release Spring Follower
39	Firing Pin Spring
40	Left Firing Pin
41	Right Firing Pin
42	Hammer
43	Hammer Spring Assembly
44	Left Sear
45	Right Sear
46	Sear Spring
47	Safety and Barrel Selector
48	Selector Pin
49	Selector Plate Spring
50	Selector Link
51	Recoil Pad
52	Recoil Pad Screw
53	Stock Bolt
54	Stock Bolt Washer
55	Stock



**[www.pallas-sports.com](http://www.pallas-sports.com)**

[mail@pallas-sports.com](mailto:mail@pallas-sports.com)